



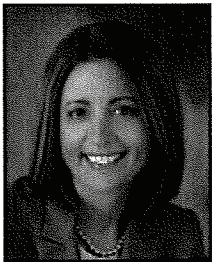
# YOU ARE INVITED TO AN ELDER CONFERENCE

## KNOWLEDGE = PREVENTION

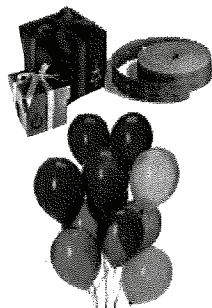
Avoid the pain and cost of being a victim-being informed is the best defense and an important safeguard against deception, high-pressure sales tactics, scams, and physical abuse. At this conference you will learn issues to consider and steps to take to protect yourself from becoming a victim and what to do if you believe you have been victimized. Join Bristol County District Attorney C. Samuel Sutter, Attorney Gina DeRossi, Register of Probate, and the Attleboro Council on Aging to learn about the resources available in your community to help you make informed choices and prevent harmful consequences.



District Attorney  
C. Samuel Sutter



Register of Probate  
Attorney Gina DeRossi



### Door Prizes

AAA Road Assistance Kit  
Emergency Preparedness Kit  
CVS Gift Cards  
Stop & Shop Gift Cards

**Date:** **Thursday, June 4, 2009** 9:00 a.m. to 2:00 p.m.  
Wheaton College, Emerson Dining Hall, 26 E. Main Street Norton, MA 02766

**To Register:** Contact your local Council on Aging or Cecelia at the District Attorney's Office 508-961-1984

**Registration Fee:** \$5.00 includes a delicious box lunch. Checks payable to the Attleboro TRIAD.  
(send check care of:) Attleboro COA, 25 South Main Street, Attleboro, MA 02703

### Conference Schedule:

**9:00-9:30** **Registration:** Complimentary Continental Breakfast sponsored by D.A.Sutter

**9:30-10:00** **Opening Remarks:** Bristol County District Attorney C. Samuel Sutter

**10:00-11:00** **BE INFORMED & BE PROTECTED!**

**District Attorney Sutter's Abuse Unit**  
An elder abuse prosecutor will discuss the many different forms of abuse - from financial to physical. Learn how to recognize and report abuse, how cases are prosecuted, tips to prevent abuse, and your rights as a victim.

**11:00 - 11:15** **Break**

**11:15 - 12:15** **What Is The Registry of Probate & Family Court and How Can It Work For You?**  
Almost every person will have some contact during his or her lifetime with the Probate & Family Court, or "people's court", since it is the court that deals with significant elder law issues such as probate of wills, guardianships, restraining orders and many other important services.

**12:15 - 1:15** **Lunch** Box lunch courtesy of CVS Caremark

**1:15 - 2:00** **Community Resource Tables**  
South Coastal Counties Legal Services • Secretary of the Commonwealth • Community VNA (free blood pressures offered)  
Executive Office of Elder Affairs/SHINE • Bristol Elder Services • New Hope, Inc. • Norton CVS • Elder Law Attorneys

*Accommodations for the Deaf & Hard of Hearing.  
Blood Pressures Courtesy of Community VNA*

**Seating is limited-register early  
Contact your local Council on Aging**

**Sponsored by: Attleboro Council on Aging,  
District Attorney Sutter, & CVS Caremark**



**CVS  
CAREMARK**